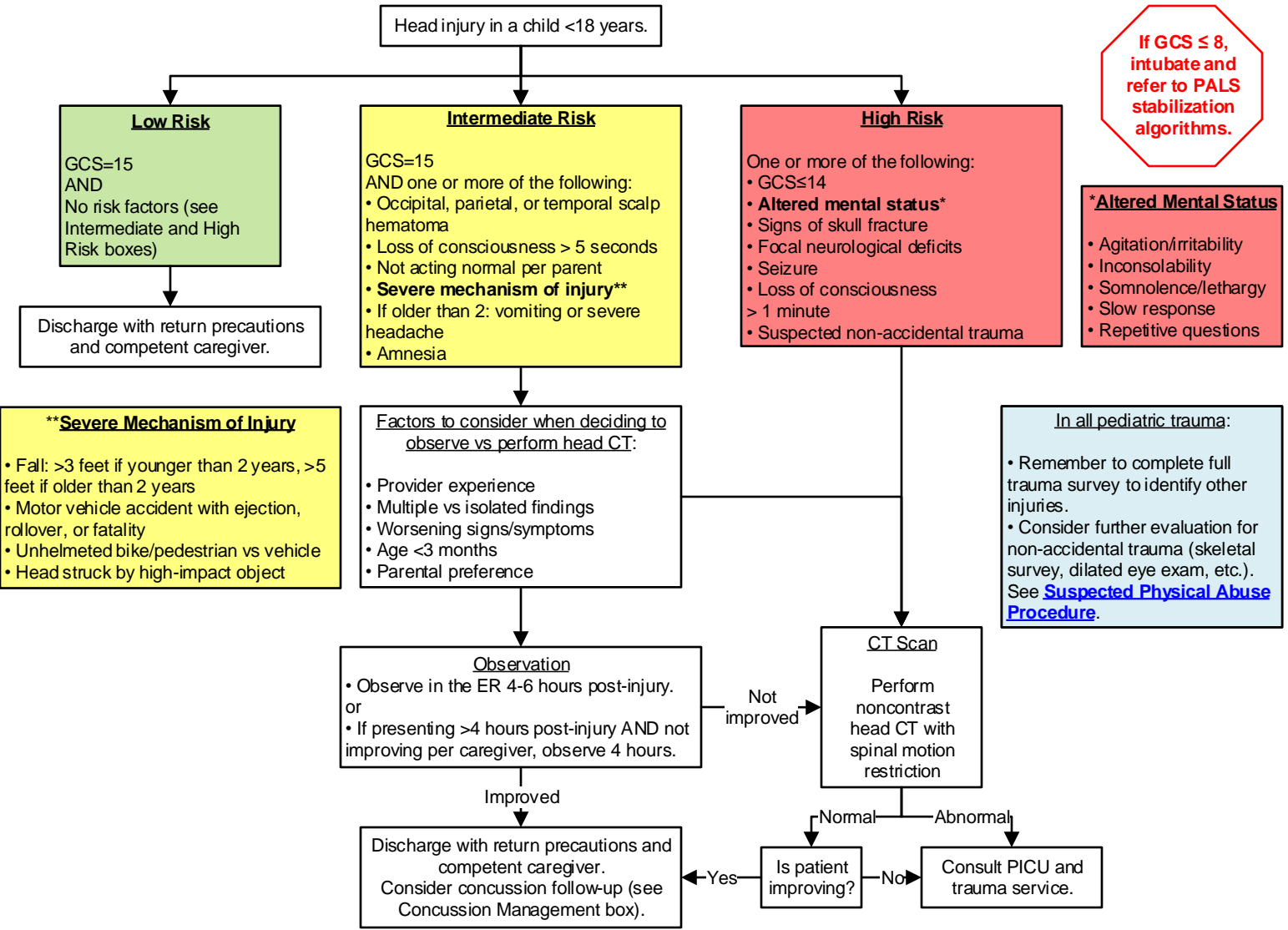




# Yukon-Kuskokwim HEALTH CORPORATION

## Clinical Guideline

### Head Injury in Patients < 18 Years Old



Village Management

- If Low Risk: Discharge with competent caregiver with clear return precautions. Do not send to Bethel unless otherwise indicated.
- If Intermediate Risk: Consider medevac vs observation with Q1h VS and neuro checks. If any worsening or no improvement over 4 hours, activate medevac.
- If High Risk: Activate medevac.

Plain films of the skull are not recommended.

C-spine Injury

Please see the [YKHC Spinal Cord Injury Management guideline](#) for pediatric C-spine resources.

Concussion Management

- Complete [Acute Concussion Evaluation](#) at every visit.
- Follow-up in outpatient clinic in 1-2 weeks.
- Consider [Sport Concussion Assessment Tool \(SCAT\)](#) at follow-up.
- Consider balance testing.
- Avoid medications that can worsen somnolence.
- If symptoms persist >3-4 weeks, consider referral to neurologist, psychologist, physical therapy, etc.
- Return to school per [CDC Heads Up Protocol](#).
- Return to play per [ASAA Guidelines](#).

**Pediatric Glasgow Coma Scale (GCS)**

	Infant	Child	
<b>Eye opening</b>	Spontaneous	Spontaneous	4
	To speech	To speech	3
	To pain	To pain	2
	No response	No response	1
<b>Best verbal response</b>	Coos, babbles	Orientated, appropriate	5
	Irritable cry	Confused	4
	Cries to pain	Inappropriate words	3
	Moans to pain	Incomprehensible sounds	2
<b>Best motor response</b>	No response	No response	1
	Moves spontaneously	Obeys commands	6
	Withdraws to touch	Localizes painful stimulus	5
	Withdraws to pain	Withdraws to pain	4
<b>Best motor response</b>	Flexion to pain	Flexion to pain	3
	Extension to pain	Extension to pain	2
	No response	No response	1

This guideline is designed for the general use of most patients but may need to be adapted to meet the special needs of a specific patient as determined by the medical practitioner.  
Approved by Clinical Guideline Committee 5/15/23.  
Click [here](#) to see the supplemental resources for this guideline.  
If comments about this guideline, please contact [Clinical\\_Guidelines@ykhc.org](mailto:Clinical_Guidelines@ykhc.org).